

C-TOUCH

All in one Clam Shelve unit

This equipment is designed to process all Relief plates. The C-Touch is a compact unit in a modern in compact format providing convenient and easy plate handling. All configurations Water Flexo, Solvent Flexo and Letterpress available



- ▶ **Washout section:** the plate is fixed face down on the plate holder. Relief washout is obtained by orbital movement of the plate over a brush frame. Automatic closing and opening of the brush frame at the end of the cycle.
- ▶ **Exposure:** Pull out vacuum drawer with draw down sheet to hold plate during UVA exposure.
- ▶ **Light finisher & Px:** Pull out drawer for UVC anti-tack exposure and UVA combined for post exposing the plate
- ▶ **Dryer:** Three dryer drawers with temperature control and exhaust blower.

Key features

- ◆ Reliable operation
- ◆ Robust design
- ◆ Best-in-class waste water capabilities
- ◆ Remote diagnostic
- ◆ Environmentally friendly system

SPECIFICATION

All configuration possible: WO / WO-D /...

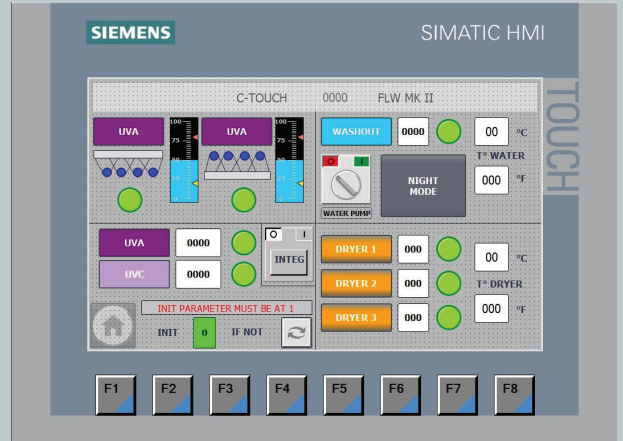
Available for any plate

Water FLEXP (FLW)

Letterpress (LP)

Solvent Flexo (FL)

TOUCH SCREEN CONTROL



TECHNICAL DATA	C-Touch 25/30	C-Touch 30/40	C-Touch 36/48
Processor type	Clamshell	Clamshell	Clamshell
Maximum plate size cm inch	63 X 76 25 X 30	76 X 102 30 X 40	92 X 122 36 X 48
External dimensions (W x L x H) cm inch	125 x 152 x 120 50 x 60 x 48	130 x 198 x 120 52 x 78 x 48	145 x 220 x 120 58 x 87 x 48
Net Weight kg pounds	505 1114	730 1610	990 2183
Filter dimensions cm inch	70 x 45 x 100 28 x 18 x 40	70 x 45 x 100 28 x 18 x 40	70 x 45 x 135 28 x 18 x 54
Filtration weight kg pounds	45 100	45 100	48 106
Electrical requirement UL 230v 3W+PE	32A	40A	50A
Electrical requirement CE 400v 3W+N+PE	25A	32A	40A



Conforms to: 2006/42 EG
2011/30/EU: EN 50581
2014/30/EU: 55032:+ EN 55024
2014/35/EU: EN 60950-1



Conforms to: UL Std. 60950-1
Cert to CSA Std. C22.2 N°60950-1

Intertek
5003605

Nota: The information given in this document is offered in good faith and is correct at the time of publication. We however reserves the right to amend or withdraw any product without prior notice. Please check for latest updates.



506, Veena Killedar Industrial Estate,
10/14, Pais Street, Byculla (West),
Mumbai - 400011, India

Phone : 022-23088339 / 022-49701633. Mobile : +91 9820217147
Email : rohitsachdev@luckygraphics.in | sales@luckygraphics.in
www.luckygraphics.in