



INTRODUCTION

Flexo



Printable
Electronics

Cosmetics

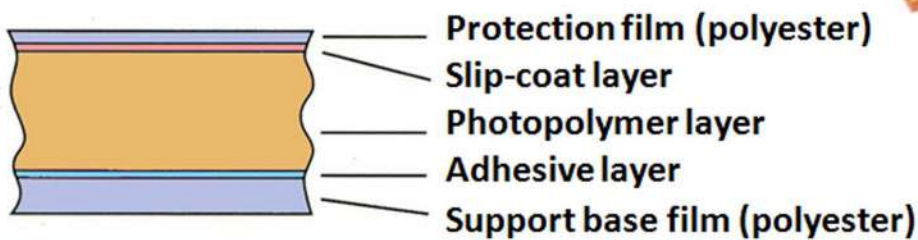
JemFlex® Flexographic Photopolymer Printing Plates

- Application: Corrugated, Flexible packaging, Label/Tag, Envelope, etc.
- Accurate plate thickness
- Higher reproduction capability
- Excellent resilience and durability
- Outstanding ozone resistance
- Wide range of plate types
- CTP (Computer to Plate) type under developing



Jemflex®

Plate sectional structure



→ Well competitive among others in quality and performance.



JemFlex® Specification Sheet

March 20, 2010

Types of Polymer		HG	3H	GX	SX	YE	FC
Applications	Flexible Packaging	○	⊙	○	⊙	-	-
	Carrier Paper Bags	-	○	⊙	○	-	○
	Paper Sacks	-	-	-	-	○	○
	Labels, Films, Papers, Folding Cartons	⊙	⊙	○	○	-	-
	Beverage Cartons	-	⊙	⊙	⊙	-	-
	Pre-Print Liners	-	○	⊙	-	-	-
	Corrugated Post-Print	-	-	-	-	⊙	⊙
	Spot Varnishing	⊙	⊙	○	○	-	-
Thickness/Hardness (ShoreA)	Thickness Code 11 = 1.14mm (0.045")	73 S	-	-	-	-	-
	17 = 1.70mm (0.067")	-	70 S	60 N	-	-	-
	23 = 2.28mm (0.090")	-	65 N	56 S	-	-	-
	25 = 2.54mm (0.100")	-	63 S	55 S	53 N	-	-
	27 = 2.72mm (0.107")	-	62 S	54 N	52 N	-	-
	28 = 2.84mm (0.112")	-	62 S	53 S	51 S	-	40 S
	32 = 3.18mm (0.125")	-	59 S	51 N	49 S	-	38 S
	40 = 3.94mm (0.155")	-	-	-	-	37 S	36 S
	47 = 4.70mm (0.185")	-	-	-	-	35 N	35 S
	55 = 5.50mm (0.217")	-	-	-	-	34 N	34 S
63 = 6.35mm (0.250")	-	-	-	-	33 N	33 S	
70 = 7.00mm (0.276")	-	-	-	-	31 S	31 N	
Repro.	Halftone Screen Dot (120 LPI/47 LPCM)	1~95%	1~95%	1~95%	1~95%	3~90%	3~90%
	Isolated Dot	0.150 mm	0.150 mm	0.150 mm	0.150 mm	0.250 mm	0.300 mm
	Fine Line	0.100 mm	0.100 mm	0.100 mm	0.100 mm	0.200 mm	0.250 mm
	Plate colour	dark brown	dark brown	green	light brown	blue	light red
Resist.	Ozone	○	○	○	○	○	○
	Solvent Inks	⊙	⊙	⊙	⊙	-	-
	UV Inks	⊙	⊙	⊙	⊙	-	-

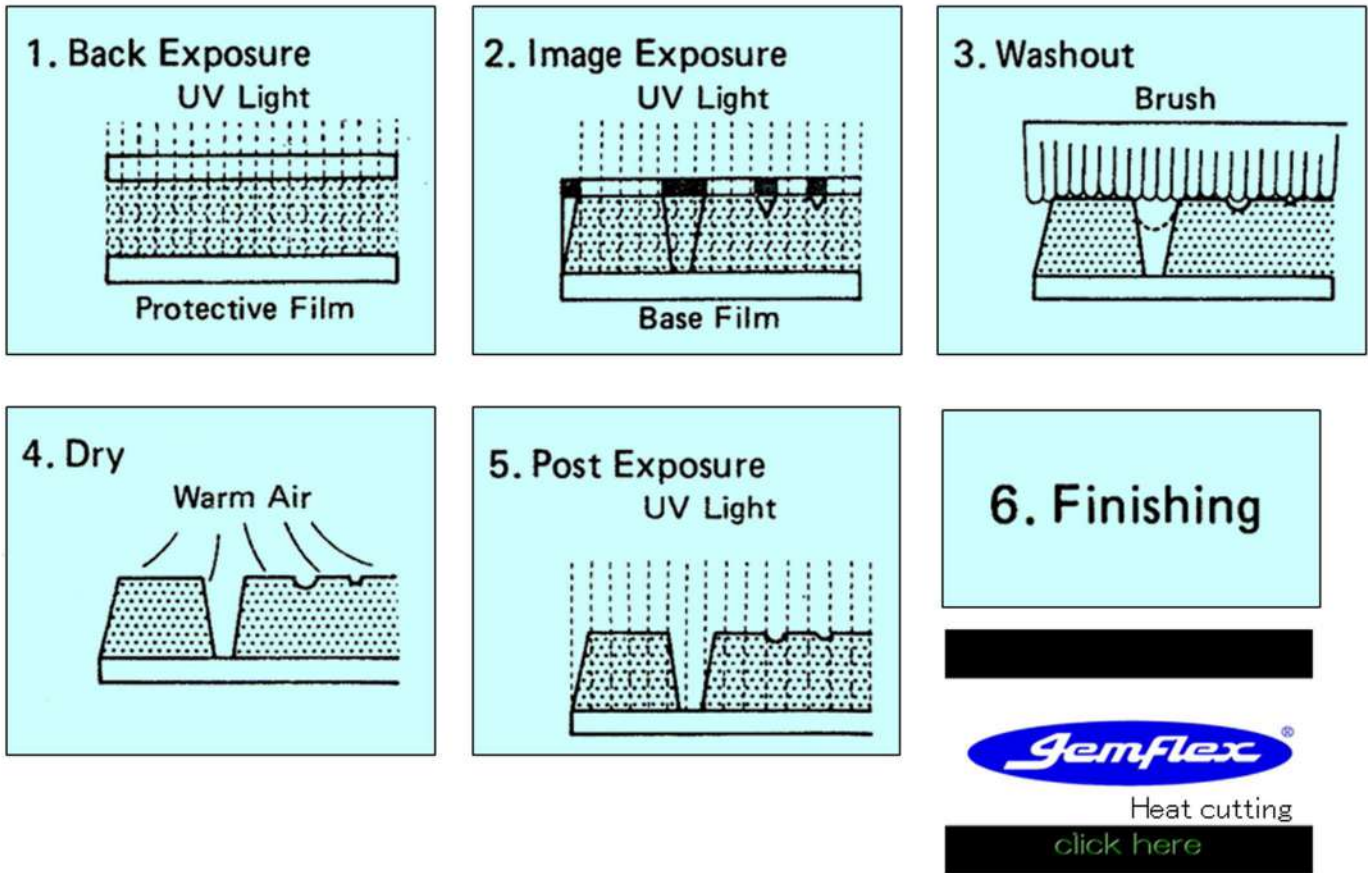
- * Remarks: 1) Those marked with ⊙ are very good and with ○ are fairly good.
 2) Those with [-] mark are not available.
 3) Those marked with S are regularly supplied, and with N are not but shall be available depending on order quantity.

JemFlex Packing Specifications

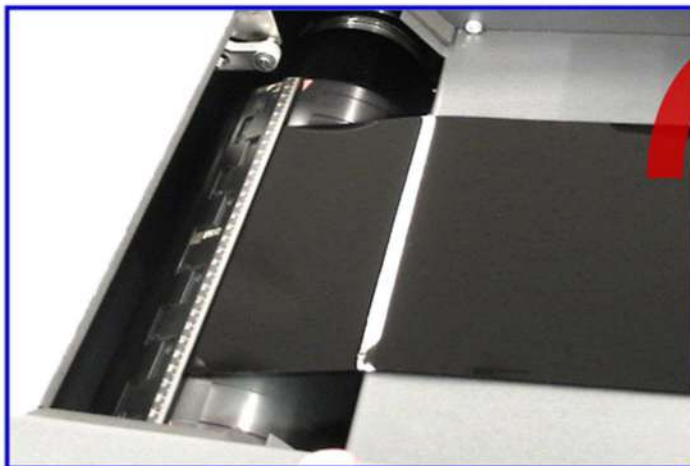
Revised on December 25, 2008

Size Code	Size (mm)	Sqm/Plate (m ²)	Number of Plate / Carton Box																
			1.14mm	1.70	2.00	2.28	2.54	2.72	2.84	3.00	3.18	3.94	4.50	4.70	5.00	5.50	6.00	6.35	7.00
A1	600x840	0.5040	10	10	10	8	8	8	8	6	6	6	6	6	6	5	5	5	
A0	840x1200	1.0080	10	8	6	8	6	6	6	6	6	x	5	3	3	3	3		
A0W	900x1200	1.0800	18	15	x	12	12	12	12	10	10	10	x	9	8	8	x	7	6
2030	508x762	0.3871	10	10	8	8	8	8	8	6	6	6	x	x	x	x	x	x	
2430	610x762	0.4648	10	10	8	8	8	8	8	6	6	6	x	x	x	x	x	x	
3040	762x1016	0.7742	18	15	x	12	12	12	12	10	10	10	x	9	8	8	x	7	6
3545	889x1143	1.0161	18	15	x	12	12	12	12	10	10	10	x	9	8	8	x	7	6
4260	1067x1524	1.6261	12	10	10	8	8	8	8	7	7	6	x	5	5	5	5	5	4
4280	1067x2032	2.1681	x	10	10	8	8	8	8	7	7	6	x	5	5	5	5	5	4
4760	1200x1524	1.8288	x	10	10	8	8	8	8	7	7	6	x	5	x	x	x	5	x
4780	1200x2032	2.4384	x	10	10	8	8	8	8	7	7	7	x	5	5	5	5	5	4

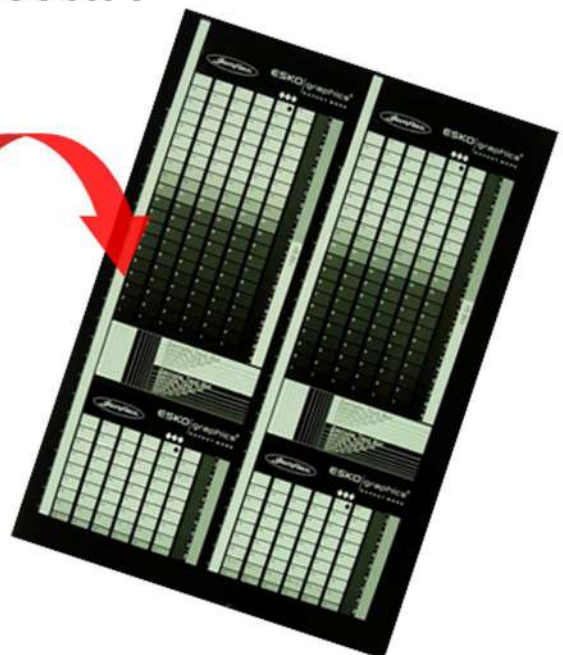
Platemaking Process



CTP JemFlex[®] digital plate
Under development coming soon !



Ablating by ESKO Spark



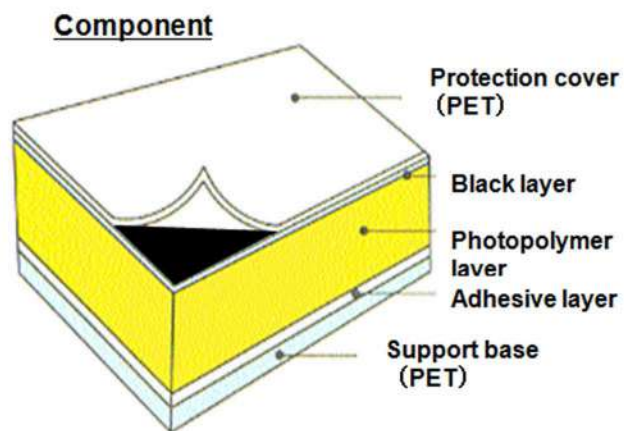


CTP JemFlex® digital plate

CTP (Computer to Plate)

Black layer type

(1) Components and Characters



Required characters

- 1. Absorbing IR laser and Ablation**
- 2. Masking(Opaque) against UV**
- 3. Black layer to remove during developing**

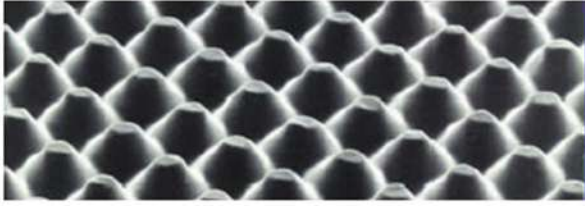
High density black carbon is containing in the slip coat layer.

(2) Characters of plate

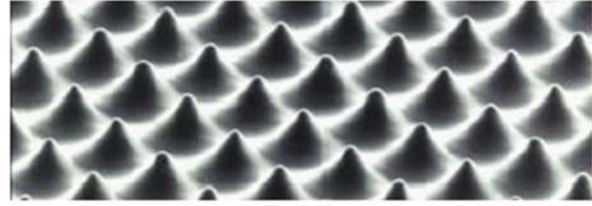
> High quality printing

➤ Much better reproductivity of Screen and letters

Conventional Plate



CTP Plate



> Costing down in total

- No need for film making
- Make Prepress process easy and stable quality
- Reduce personel costs

> Better productivity

- Shorter time in Prepress process
- Less mistake in process due to easy platemaking